



Obstacles do not block the path, they are the path!

SHERP ALL-TERRAIN VEHICLE OVERCOMES CROSS-COUNTRY CONDITIONS OF ANY LEVEL.



ABOUT US



QUADRO INTERNATIONAL is a company with international quality standards certificate ISO 9001.

In 2012, our team has introduced our SHERP all-terrain vehicle to the world, which has no analogues in the world in terms of functionality and technical characteristics.

It took us 20 years to develop a reliable amphibian all-terrain vehicle overcoming the most difficult natural obstacles: eminences and hills with a slope of 35 degrees, water (water basins, marshes, ice) and ground (stone fields, sand, snow, fallen timber) surfaces.

In 2016, the British TopGear auto show called SHERP “a tank for two”.

SHERP all-terrain vehicle is a reliable assistant for specialists who overcome natural difficulties as a part of their profession: geologists, oil workers, fishermen, hunters, extreme drivers, and travelers. It comes to help where other cars surrender.



Obstacles do not block the path, they are the path!

ADVANTAGES OF SHERP ALL-TERRAIN VEHICLE

All SHERP equipment and optional equipment are manufactured by global luxury manufacturers:

DOCOL®
HIGH STRENGTH STEEL

Parts are made of DOCOL steel, which is resistant to deformation due to high yield strength (1000 MPa), which indicates its strength and resistance to deformation. All parts of the mechanism have a zinc coating, which extends the service life by 30 years.

Kubota®

The heart of SHERP all-terrain vehicle is the engine of the Japanese company Kubota, which has specialized in the manufacture of high-tech diesel engines for 120 years. Not a single fault was detected throughout the whole time of using Kubota engines on our all-terrain vehicles.

RAPTOR®

The exterior coating of the all-terrain vehicle is Raptor polyurethane paint. This type of coating has soundproof and water repellent properties. Professional paint Raptor protects against mechanical damage, corrosion, mould, chemical exposure (fuel, machine oil).

ADVANTAGES OF SHERP ALL-TERRAIN VEHICLE

QUALITY CONTROL

Our specialists pay special attention to quality control and safety of manufactured machines. Every piece of SHERP internal and external equipment is thoroughly tested in several stages.

TESTING

The main stage of testing is to test each unit at our own site. The all-terrain vehicle is being tested on various types of surfaces for your safety.

RELIABILITY

Thus, SHERP all-terrain vehicle is a synonym of reliability and failure-free operation, and you can rely on it in the most difficult conditions in the wild.



Obstacles do not block the path, they are the path!

INNOVATIVE DEVELOPMENTS



The QUADRO INTERNATIONAL Company has its own design office, which is engaged in the continuous improvement of SHERP technology. Due to innovative developments, improved modification of the original **SHERP-DT** and new all-terrain vehicle **SHERP-THE ARK** were released in 2019.

SHERP IN THE WORLD

Our company took part in prestigious international exhibitions :

SEMA Show Las Vegas, United States

Operation Convergent Response (OCR2018) Georgia, USA

EMS World Expo Nashville, USA

Show for local administration UAE

Eurosatory France Paris, France

AAD Cape Town, RSA

Automotor show Oslo Oslo, Norway

The developments of our designers were highly appreciated by professionals in various fields: extreme driving, rescue organizations, construction companies, as well as by other professionals working under difficult conditions.



The SHERP dealer network has 30 representatives in more than 60 countries in South America, Europe, Africa, Asia, and Australia.



Obstacles do not block the path, they are the path!

SHERP ALL-TERRAIN VEHICLE

SHERP all-terrain vehicle has no analogues in the world in cross-country ability. Unique tubeless low-pressure tyres and fail-safe design ensure overcoming any off-road.

Specifications

maximum speed	up to 40 km/h
overwater speed	up to 6 km/h
type of tyres	tubeless, extra-low pressure
tyre size	1 600 x 600 x 25
overcomable soil	any
fuel consumption	2-3 L/h (depending on the type of soil)
fuel tank volume	56 L
capacity of additional fuel canisters	58 x 4 (58 L of each canister)
uphill steepness	35 degrees
The height of a hill in the form of a vertical step	1000 mm

Overall dimensions

length	3400 mm
width	2520 mm
height	2520 mm
bearing capacity	1000 kg
fuel type	diesel
clearance	600 mm



Obstacles do not block the path, they are the path!

SHERP ALL-TERRAIN VEHICLE

FAIL-SAFETY – simplicity of design and operation. Using components, assemblies, and optional global manufacturers equipment designed for use in severe climatic conditions.

UNIQUENESS – our own patented development of pneumocirculation suspension and tubeless ultra-low pressure tyres.

SAFETY – low center of gravity eliminates rollover possibility on the water. External safety rails protect the passengers in the event of unforeseen situations. Body tightness provides positive buoyancy.

LOW WEIGHT – this factor provides additional trafficability and reduces the risk of environmental damage due to low specific pressure on the ground.

TECHNICAL PROBLEM SOLVING – if necessary, spare parts and service support will be provided within 48 hours.

MANUFACTURER WARRANTY is 1 year or 200 service meter hours.



Obstacles do not block the path, they are the path!

SHERP THE ARK ALL-TERRAIN VEHICLE



New all-terrain vehicle **SHERP The Ark** all-terrain vehicle is designed to transport a professional piece of equipment or a group of people over long distances under extreme conditions.

BEARING CAPACITY – all-terrain vehicle unique properties enable transportation of loads of up to 3000 kg across different types of surfaces.

LOAD PLATFORM – allows you to install professional equipment to perform various tasks. For example: installation of module for 18 people.

Specifications

maximum speed	up to 40 km/h
overwater speed	up to 6 km/h
type of tyres	tubeless, extra-low pressure
tyre size	1 600 x 600 x 25
overcomable soil	any
fuel consumption	12 L/h
fuel tank volume	200 L
capacity of additional fuel canisters	10 pcs. (58 L of each canister)
uphill steepness	40 degrees
the height of a hill in the form of a vertical step	1000 mm

Overall dimensions

length	9632 mm
width	2520 mm
height	2600 mm
platform length	4800 mm
platform width	2210 mm
width between platform wheels	1180 mm
bearing capacity	3000 kg
fuel type	diesel
clearance	600 mm



Obstacles do not block the path, they are the path!

USING THE ATV SHERP



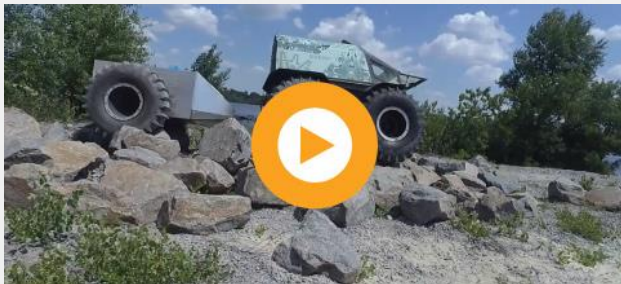
Using the ATV in Africa under the United Nations auspices



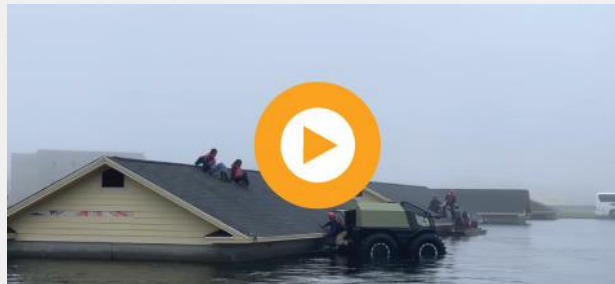
Rescue operations in the USA after Florence Hurricane



Moving across marshland



All-terrain vehicle test with a load module



All-terrain vehicle participation in international rescue exercise and training after cataclysms



USING THE ATV SHERP



Today, ATVs demonstrate a completely new level of overcoming various types of surface obstacles.

They easily overcome boulders, fallen trees, marshes, and deep snow; they float well and can easily get out of the water onto the ice.

Due to these characteristics, Sherp all-terrain vehicles are used in oil and gas, construction and environmental protection spheres, humanitarian, geological spheres and rescue operations, as well as in entertainment (hunting, fishing, etc.).



Obstacles do not block the path, they are the path!

WE ARE TRUSTED BY SUCH FAMOUS INTERNATIONAL COMPANIES AND ORGANIZATIONS AS:

United Nations — a humanitarian mission in African countries;

Gold Mines — Australian Gold Mining Company;

Duke Energy — leading American company to develop oil and gas fields;

Ukrtransgaz — Ukrainian state-owned gas pipeline maintenance company;

Ukrenergo — Ukrainian state electricity operating company;

Manitoba Hydro — one of the leading Canadian companies producing electricity and natural gas;

Enbridge — Canadian company for laying pipelines (oil and gas);

Hydro-Québec — Canadian state electricity generation and transportation company;

Great White Bear Tours — famous Canadian travel company.